

Usage Statistics for the CPU and GPU Clusters in taki: January 2019 to August 2023

Total GPU and CPU availability per month (assuming 30 days/month):

Platform: numnodes \times numcores \times hours \times days = total

CPU2013: $36 \times 16 \times 24 \times 30 = 414720$

CPU2018: $50 \times 36 \times 24 \times 30 = 1296000$

CPU2021: $18 \times 48 \times 24 \times 30 = 622080$

GPU2013: $18 \times 2 \times 24 \times 30 = 25920$

GPU2018: $1 \times 4 \times 24 \times 30 = 2880$

CPU total: 2332800

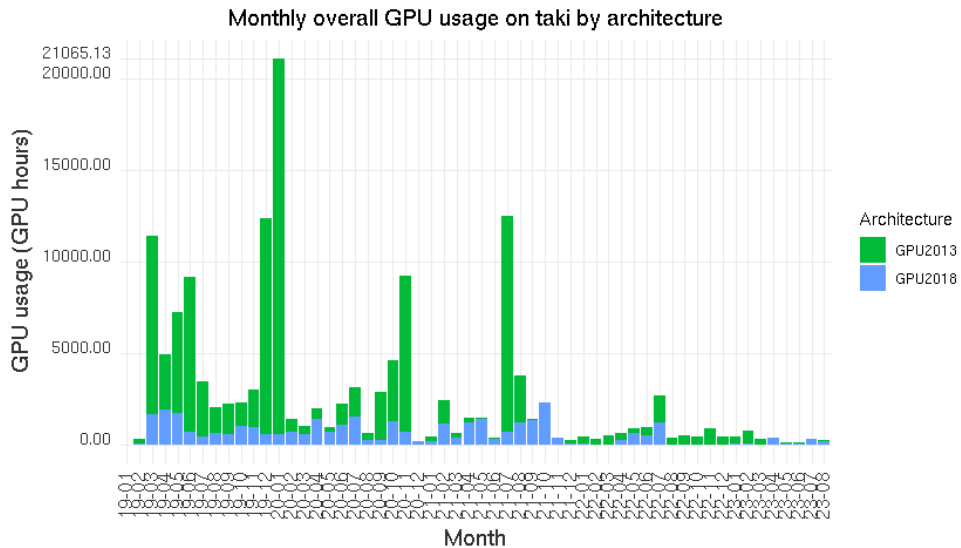
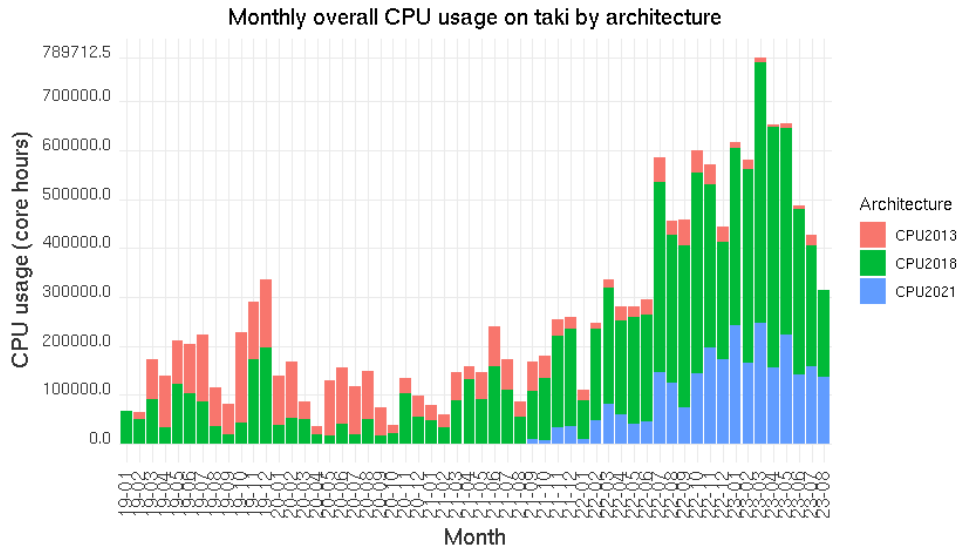
GPU total: 28800

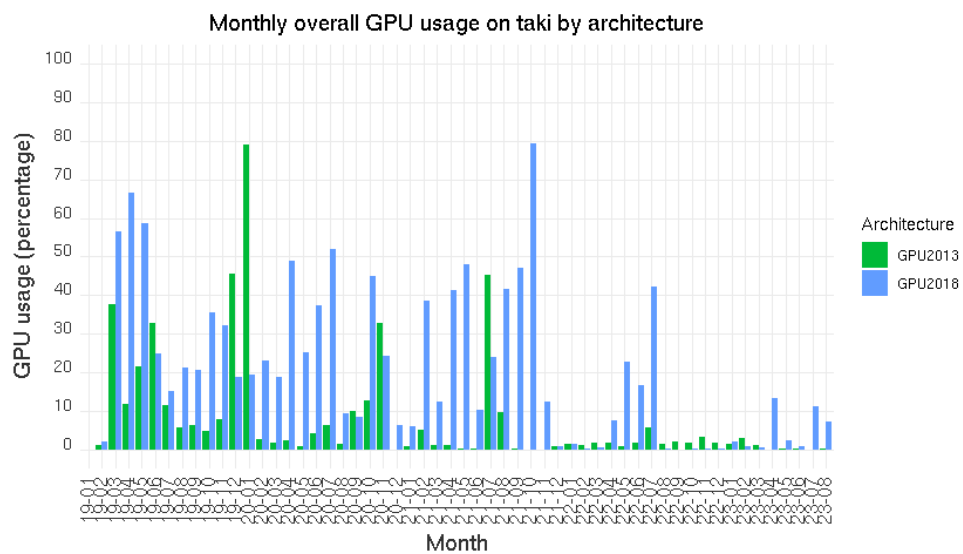
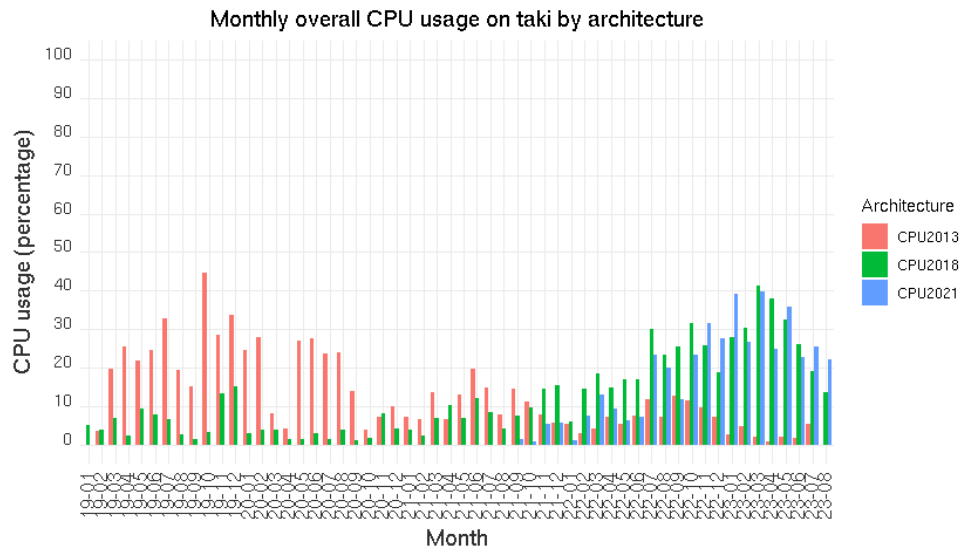
Active CPU user groups: 77

Active GPU user groups: 29

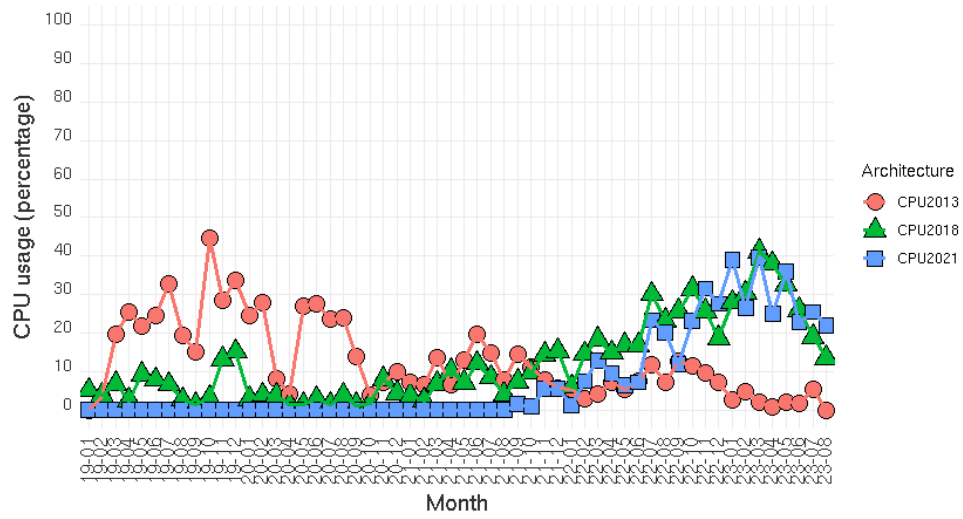
Note: Active groups are defined as groups which have non-zero usage since January 2019.

Groups include support, student, hpcreu, cybertrain, and doit.





Monthly CPU usage on taki by architecture



Monthly GPU usage on taki by architecture

